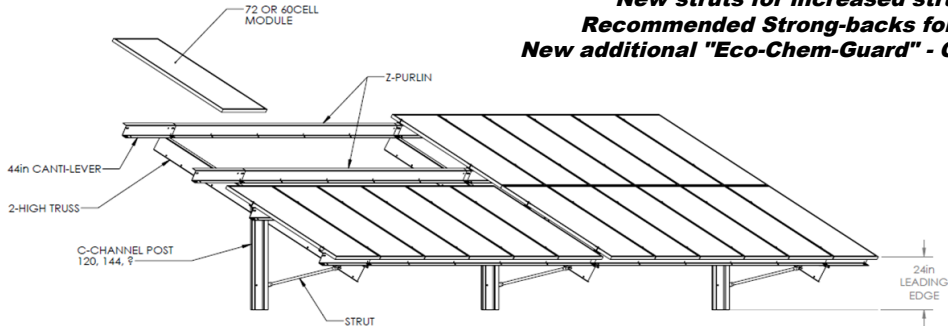




# Two-High Portrait Ground Mount



**2019 System Updates**  
**Optional modified Z-PURLIN for direct hardware to module**  
**New Truss profile to reduce cost**  
**New struts for increased structural strength**  
**Recommended Strong-backs for "high wind" areas**  
**New additional "Eco-Chem-Guard" - G230 Equivalent Coating**



## Technical Specifications

Application	Open Field	Materials	Grade 50 Galvanized Steel
Tilt Angle	5-40 Degrees	Wind Load	Up to 115mph*
Orientation	2-High Portrait	Snow Load	Up to 60psf*
Modules	All Major Brands 60 & 72 Cell	Warranty	20 year
Terrain	Up to 5deg East/West	Ground Clearance	24in Standard
Foundation	Pounded Post		

**HIGHLIGHT:** All structural components are fabricated from "Prime" 11 Gage (.115-.125) Grade 50 (G-90) Chem Treated USA Steel. All material certifications available upon request.

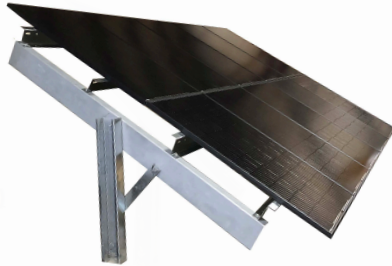
### 4 Main Components

**1. 4 x 7 IN C-CHANNEL POST**  
 Optional Lengths = 8 – 17 Feet

**2. SLR-STRUT-50**  
 Reinforcement Brace

**3. TRUSS - 120**  
 5-40 Degree Angle Adjustment

**4. Z-PURLIN-(2-5 Panel Lengths Available)**  
 Wire Tie Management Holes  
 Additional Slots for direct module tie-in



### Optional Components

**Z-PURLIN BRACE**  
 Recommended in high wind/heavy snow areas

**SLR-STRONGBACK**  
 Recommended in high wind/heavy snow areas

**Z-PURLIN CANTILEVER-44**  
 Allows additional modules to be installed at the beginning and end of each row.

### Hardware Requirements

All items are packaged in kits ready for installation  
 2x 5/8-11 x 1 ¼ Serrated Flanged Bolts & Nuts  
 6x 1/2-13 x 1 Serrated Flanged Bolts & Nuts

**AK Solar UL-467 SS MID CLAMP KIT**

- 5/16-18 x 2 ¼ SS HEX CAP BOLT
- 5/16 SS SPLIT LOCK WASHER
- SDE Custom Z-PURLIN Extruded Clamp

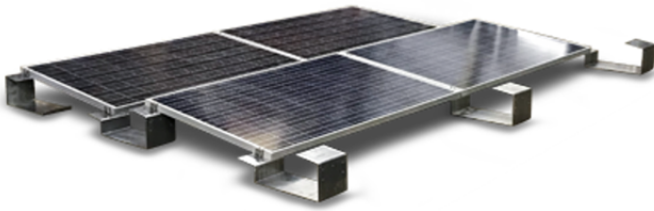
**AK Solar UL-467 SS END CLAMP KIT**

- 5/16-18 x 2 ¼ SS HEX CAP BOLT
- 5/16 SS SPLIT LOCK WASHER
- SDE Custom Z-PURLIN Extruded Clamp





# 7 Degree Ballasted Roof Mount



APPLICATION	FLAT ROOF		
Tilt Angle	7 Degrees	Ballast Calculations & BOM	Available upon request
Module Orientation	Landscape	Wire Management	Available
Wind Load	150 MPH	Foundation	Non Penetrating or Penetrating
Roof Load	Site Specific Data (3-5PSF)	Material	Aluminum or HS G90 Steel
Grounding	Integrated N/S & E/W UL	Manufacturing	Made in Michigan, USA

**HIGHLIGHT: All components are fabricated from 5052-H32 Aluminum or "Prime" 11 Gage (.115-.125) Grade 50 (G-90) Chem Treated USA Steel. Manufactured in Albion, Michigan. All material certifications available upon request.**

## 4 Main Components For Easy Installation

### 1. NORTH PAN

Designed to reduce footprint (Ballast under module)

### 2. SOUTH PAN

Designed to reduce footprint (Ballast under module)

### 3. MID PAN

Lightweight Mounting base

### 4. BALLAST BLOCK BARS

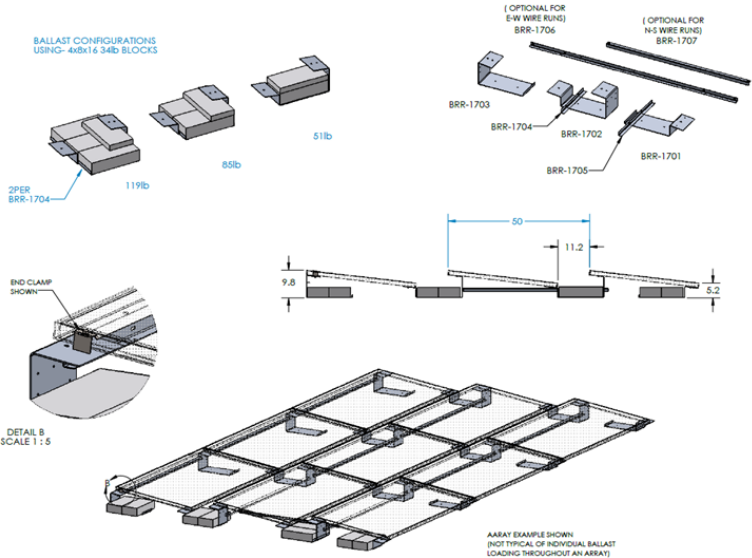
2Block & 3Block "no Installation effort – PM Tabs"

## Optional Components

### North/South Wireways

### East/West Wireways

### Wind Deflectors to lower PSF (If needed)



## Minimal Hardware Requirements for Quick Assembly

All items are packaged in kits ready for installation

### AK Solar UL-467 SS MID CLAMP KIT

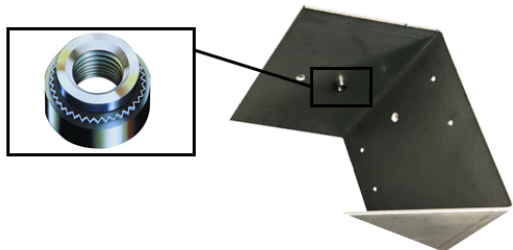
- 5/16-18 x 2 1/4 SS HEX CAP BOLT
- 5/16 SS SPLIT LOCK WASHER

### AK Solar UL-467 SS END CLAMP KIT

- 5/16-18 x 2 1/4 SS HEX CAP BOLT
- 5/16 SS SPLIT LOCK WASHER

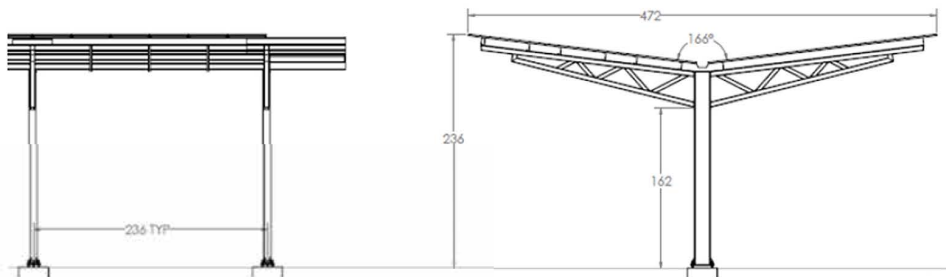


**HIGHLIGHT: This system was designed to support rapid installation. Two stamped Stainless Steel 5/16-18 Clinch Nuts allow the installers to quickly assemble the AK clamp kits to the Ballast Pans.**





# Y-Canopy Carport System



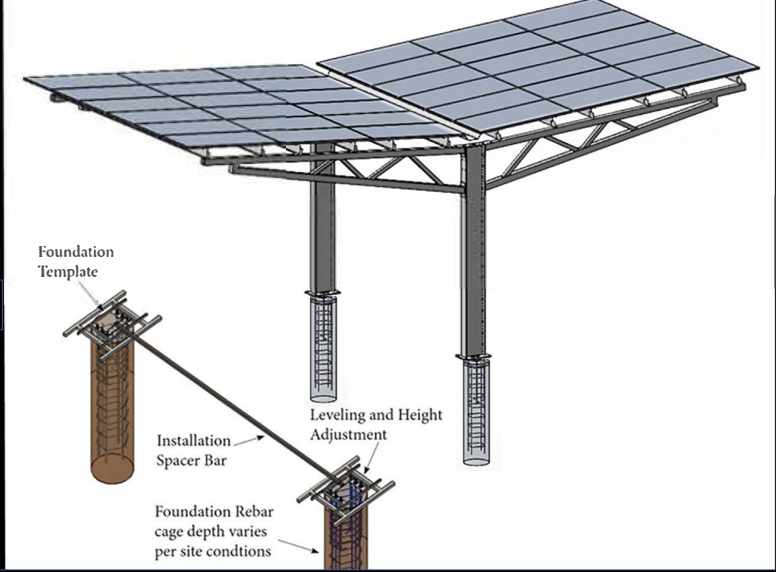
<b>Application</b>	Parking Area & Sidewalks		
<b>Tilt Angle</b>	7 Degrees	<b>Modules Per Section</b>	36
<b>Module Orientation</b>	Portrait	<b>Ground Clearance</b>	Site Specific
<b>Wind Load</b>	125 MPH	<b>Foundation</b>	Reinforced Concrete
<b>Snow Load</b>	50 PSF	<b>Purlin Length</b>	236 Inches
<b>Post Spacing</b>	236 Inches	<b>Manufacturing</b>	Made in Michigan, USA

**HIGHLIGHT:** All structural components are fabricated from **USA Steel**. All material certifications available upon request.

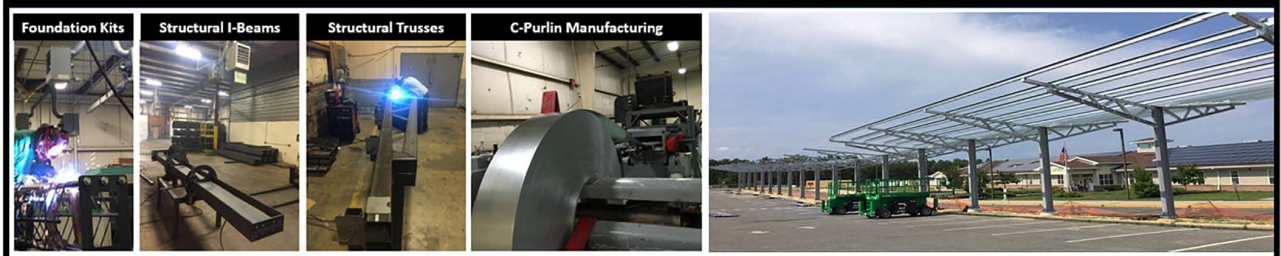
- Minimal Components For Easy Installation**
- 1. FOUNDATION KIT-120**  
Custom Welded Rebar Foundation Kit with J-Bolts
  - 2. I-BEAM**  
Site Specific Lengths 50lb/FT Beams
  - 3 & 4. CP-TRUSS-3P**  
7 Degree angle
  - 5. C-PURLIN**  
12 Gage Grade 50 – G90 – Chem Treated Steel
  - 6. STRONGBACKS**

- Optional Components**
- 7. GUTTERS**  
12 Gage Grade 50 – G90 – Chem Treated Steel
  - 8. CANTILEVERS (1 or 2 Panel Adders)**
  - 9. CLOSE-OUTS**
  - 10. END CAPS**

**HIGHLIGHT:** C-Purlins have stamped holes for direct tie in of hardware to modules with UL grounding lock washers. **\*\*NO CLAMPS!\*\***



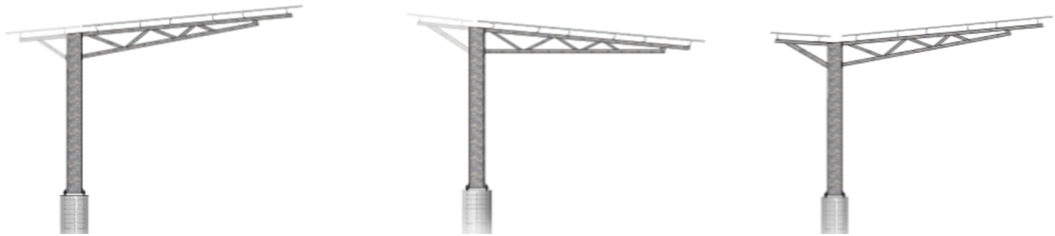
**Designed & Manufactured in Michigan, USA**







# L-Canopy Carport System



Application	Parking Area & Sidewalks	Modules Per Section	18 - 24
Tilt Angle	7 Degrees	Ground Clearance	Site Specific
Module Orientation	Portrait	Foundation	Reinforced Concrete
Wind Load	125 MPH	Purlin Length	236 Inches
Snow Load	50 PSF	Manufacturing	Made in Michigan, USA
Post Spacing	236 Inches		

**HIGHLIGHT:** All structural components are fabricated from USA Steel. All material certifications available upon request.

## Minimal Components For Easy Installation

### 1. FOUNDATION KIT-120

Custom Welded Rebar Foundation Kit with J-Bolts

### 2. I-BEAM

Site Specific Lengths 50lb/FT Beams

### 3 & 4. CP-TRUSS-3P

7 Degree angle

### 5. C-PURLIN

12 Gage Grade 50 – G90 – Chem Treated Steel

### 6. STRONGBACKS

## Optional Components

### 7. GUTTERS

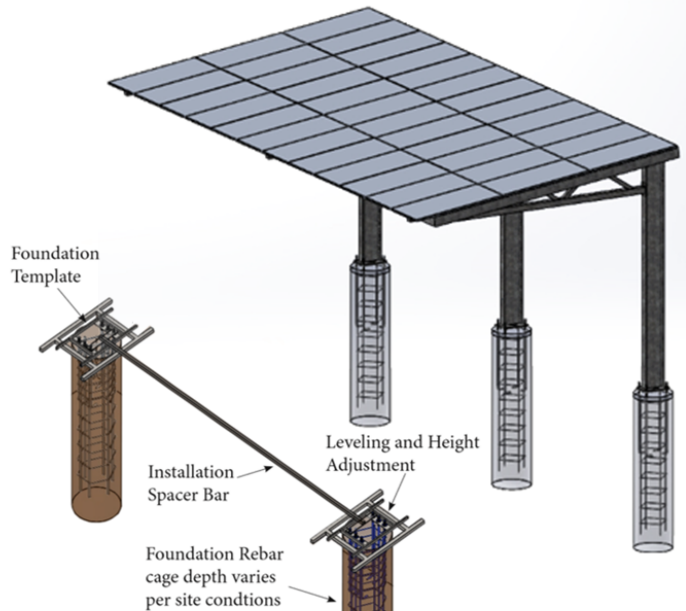
12 Gage Grade 50 – G90 – Chem Treated Steel

### 8. CANTILEVERS (1 or 2 Panel Adders)

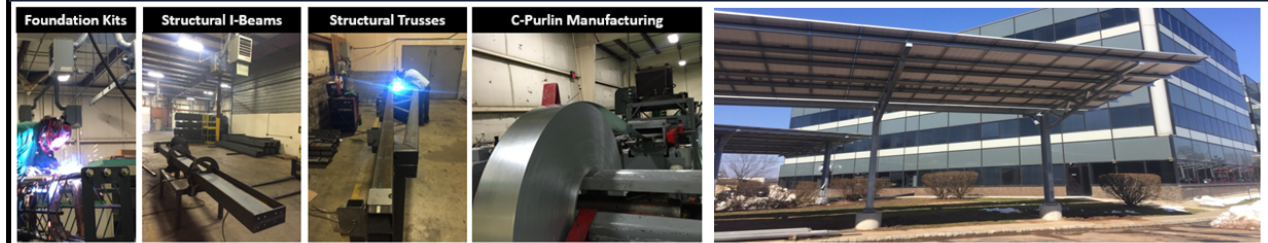
### 9. CLOSE-OUTS

### 10. END CAPS

**HIGHLIGHT:** C-Purlins have stamped holes for direct tie in of hardware to modules with UL grounding lock washers. **\*\*NO CLAMPS!\*\*\***



Designed & Manufactured in Michigan, USA





# T-Canopy Carport System



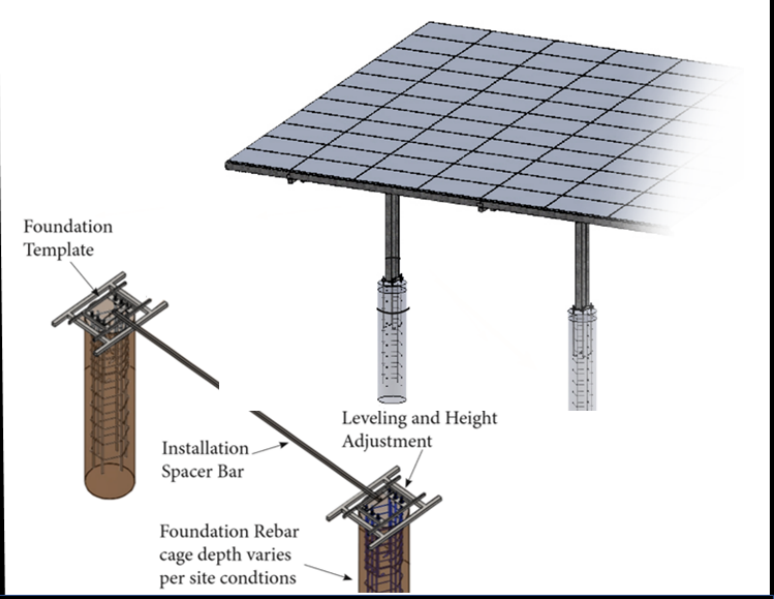
Application	Parking Area & Sidewalks	Modules Per Section	33 - 36
Tilt Angle	7 Degrees	Ground Clearance	Site Specific
Module Orientation	Portrait & Landscape	Foundation	Reinforced Concrete
Wind Load	125 MPH	Purlin Length	216 - 232 Inches
Snow Load	50 PSF	Manufacturing	Made in Michigan, USA
Post Spacing	236 Inches		

**HIGHLIGHT:** All structural components are fabricated from USA Steel. All material certifications available upon request.

- Minimal Components For Easy Installation**
- 1. FOUNDATION KIT-120**  
Custom Welded Rebar Foundation Kit with J-Bolts
  - 2. I-BEAM**  
Site Specific Lengths 50lb/FT Beams
  - 3 & 4. CP-TRUSS-3P**  
7 Degree angle
  - 5. C-PURLIN**  
12 Gage Grade 50 – G90 – Chem Treated Steel
  - 6. STRONGBACKS**

- Optional Components**
- 7. GUTTERS**  
12 Gage Grade 50 – G90 – Chem Treated Steel
  - 8. CANTILEVERS (1 or 2 Panel Adders)**
  - 9. CLOSE-OUTS**
  - 10. END CAPS**

**HIGHLIGHT:** C-Purlins have stamped holes for direct tie in of hardware to modules with UL grounding lock washers. **\*\*NO CLAMPS!\*\*\***



**Designed & Manufactured in Michigan, USA**

