



# QUIK FOOT<sup>™</sup>

## VERSATILE FLASHED BASE PLATE

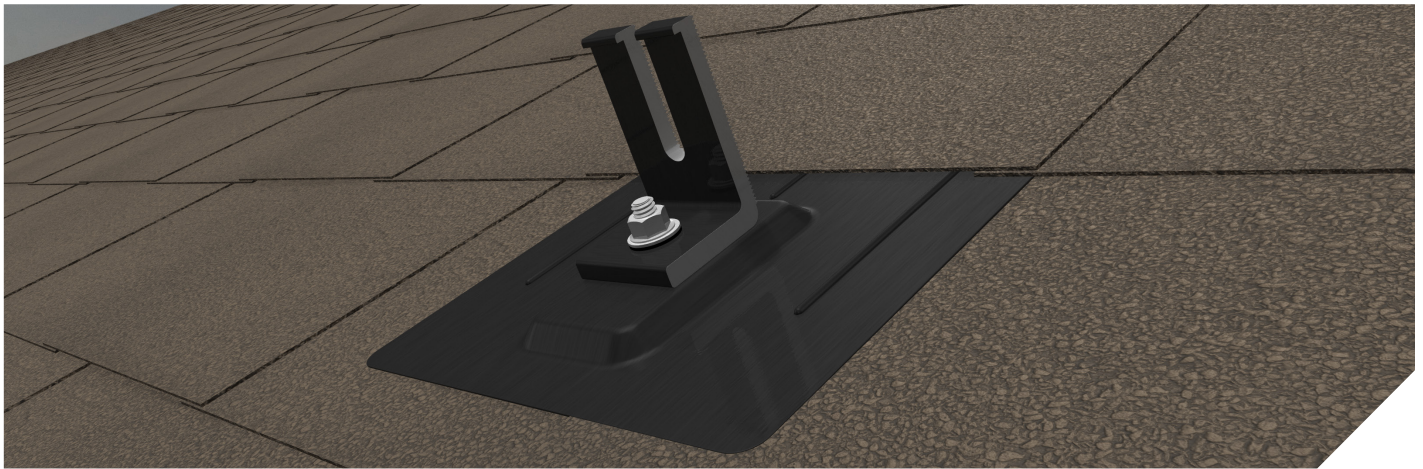
QuikFoot includes a base plate and uses two self-drilling attachment points for optimum uplift and pullout value. When paired with an EcoFasten compression bracket, the QuikFoot flashing creates a watertight seal that will maintain the roof's integrity.

## FEATURES & BENEFITS

- Patented watertight technology
- Installs without removing shingles
- Compatible with composition shingle & slate roofs
- Ideal solution for coastal locations where less drag (land) and increased winds are factor
- Compatible with a variety of Ecofasten compression brackets

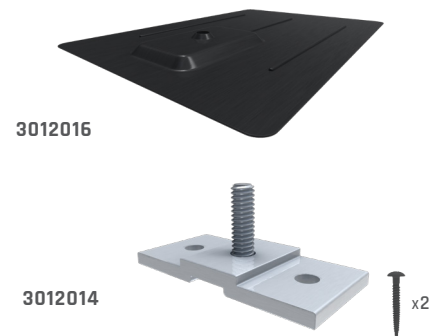
**TWO SELF-DRILLING SCREWS  
PROVIDE OPTIMUM STRENGTH**





	PRODUCT IMAGE	PART NUMBER	PART DESCRIPTION	BOX QUANTITY	PALLET QUANTITY
BASES	ASSEMBLED WITH (1) SS PEM 3/8" AND INCLUDES (1) SS EPDM BONDED WASHER AND (1) SS FLANGE NUT				
		<b>3012014</b>	QF BASE AL 1.25"	50	7000
FLASHING	INCLUDES (1) 5/16" EPDM SEALING WASHER				
		<b>3012016</b>	QF FLASHING AL BLK 8X12"	50	5250
BRACKETS	INCLUDES (1) 3/8"-16 X 1 1/4" HEX BOLT AND (1) 3/8"-16 FLANGE NUT FOR RACKING				
		<b>2012022</b>	CF UNIV L-FOOT MLL 3" (NO HARDWARE NEEDED)	50	1800
		<b>3011018</b>	L-FOOT SCL-101 BLK 3"	50	6000
		<b>3011015</b>	L-FOOT L-102 BLK 3"	50	6000
		<b>3011017</b>	L-FOOT SCL-101 MLL 3"	50	6000
		<b>3011016*</b>	L-FOOT L-102 MLL 6"	50	2400
FASTENERS	INCLUDES (1) 2" LAG BOLT AND (1) SS 8-18 X 3/4" TEK SCREW				
		<b>3011010</b>	CONDUIT BRKT COMP MLL	50	10350
	INCLUDES (1) 4" LAG SCREW AND (1) EPDM BONDED WASHER (PRE-ASSEMBLED)				
		<b>2011013</b>	RI COMP SLIDE AL BLK	50	3600
		<b>3016010</b>	DECK SCREW SS #15X2"	1000	60000
		<b>3016011</b>	DECK SCREW SS #15X3"	1000	60000
		<b>3016012</b>	DECK SCREW SS #15X4"	1000	45000

### COMBINE FLASHING & BASE:



### CHOOSE YOUR BRACKET:



\* SPECIAL ORDER ITEM