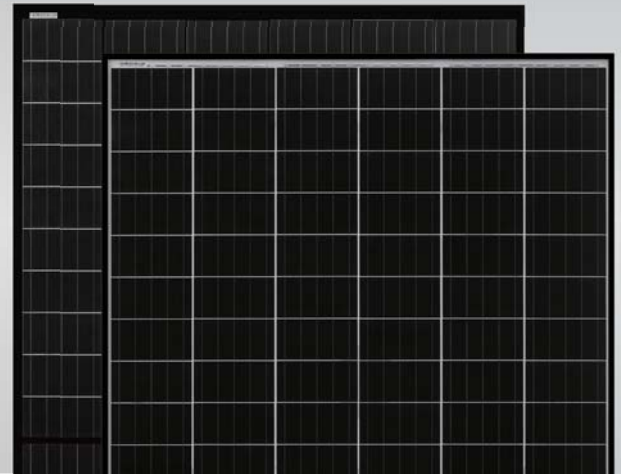


# Eagle HC 60M G2

## 315-335 Watt

MONO PERC HALF CELL MODULE

Positive power tolerance of 0~+3%



### KEY FEATURES



#### Diamond Cell Technology

Uniquely designed high performance 5 busbar mono PERC half cell



#### Higher Module Power

Decrease in current loss yields higher module efficiency



#### Shade Tolerance

More shade tolerance due to twin arrays



#### PID FREE

Reinforced cell prevents potential induced degradation



#### Strength and Durability

Certified for high snow (5400Pa) and wind (2400 Pa) loads

- ISO9001:2008 Quality Standards
- ISO14001:2004 Environmental Standards
- OHSAS18001 Occupational Health & Safety Standards
- IEC61215, IEC61730 certified products
- UL1703 certified products

Nomenclature:

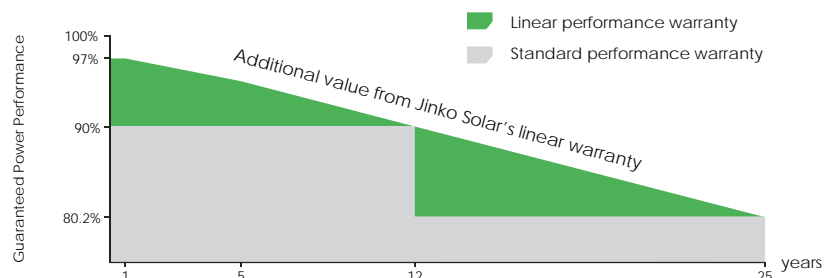
**JKM335M-60HBL**

Code	Cell	Code	Backsheet	Code	Cell
null	Full	null	White	null	Normal
H	Half	B	Black	L	Diamond

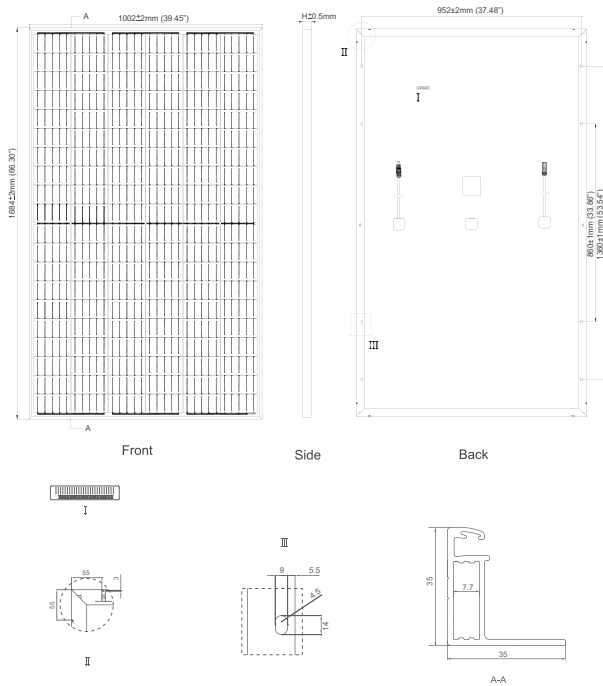


### LINEAR PERFORMANCE WARRANTY

10 Year Product Warranty • 25 Year Linear Power Warranty



## Engineering Drawings

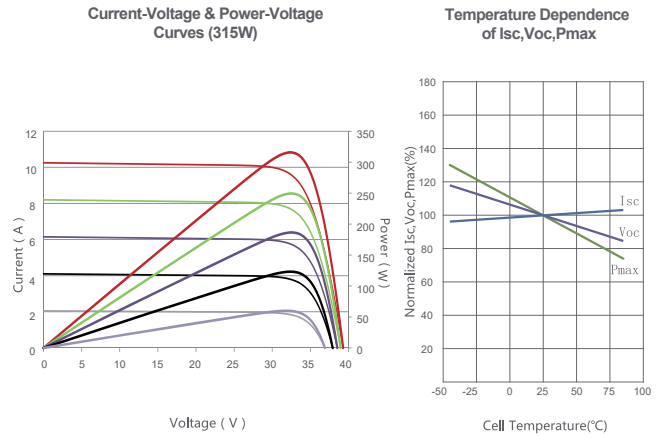


## Packaging Configuration

( Two pallets = One stack )

30pcs/pallet, 60pcs/stack, 780pcs/40'HQ Container

## Electrical Performance & Temperature Dependence



## Mechanical Characteristics

Cell Type	Mono PERC Diamond Cell (158.75 x 158.75 mm)
No. of Half-cells	120 (6×20)
Dimensions	1684×1002×35mm (66.30×39.45×1.38 inch)
Weight	19.0 kg (41.9 lbs)
Front Glass	3.2mm, Anti-Reflection Coating, High Transmission, Low Iron, Tempered Glass
Frame	Anodized Aluminum Alloy
Junction Box	IP67 Rated
Output Cables	12AWG, Anode 1525mm (60.04 in), Cathode 1525mm (60.04 in) or Customized Length
Fire Type	Type 1

## SPECIFICATIONS

Module Type	JKM315M-60HL		JKM320M-60HL		JKM325M-60HL		JKM330M-60HL		JKM335M-60HL	
	STC	NOCT	STC	NOCT	STC	NOCT	STC	NOCT	STC	NOCT
Maximum Power (Pmax)	315Wp	235Wp	320Wp	239Wp	325Wp	242Wp	330Wp	246Wp	335Wp	250Wp
Maximum Power Voltage (Vmp)	33.2V	31.2V	33.4V	31.4V	33.6V	31.6V	33.8V	31.8V	34.0V	32.0V
Maximum Power Current (Imp)	9.49A	7.56A	9.59A	7.62A	9.68A	7.66A	9.77A	7.74A	9.87A	7.82A
Open-circuit Voltage (Voc)	40.7V	37.6V	40.9V	37.8V	41.1V	38.0V	41.3V	38.2V	41.5V	38.4V
Short-circuit Current (Isc)	10.04A	8.33A	10.15A	8.44A	10.20A	8.54A	10.31A	8.65A	10.36A	8.74A
Module Efficiency STC (%)	18.67%		18.96%		19.26%		19.56%		19.85%	
Operating Temperature (°C)	-40°C~+85°C									
Maximum System Voltage	1000VDC(UL)/1000VDC(IEC)									
Maximum Series Fuse Rating	20A									
Power Tolerance	0~+3%									
Temperature Coefficients of Pmax	-0.36%/°C									
Temperature Coefficients of Voc	-0.28%/°C									
Temperature Coefficients of Isc	0.048%/°C									
Nominal Operating Cell Temperature (NOCT)	45±2°C									

STC: Irradiance 1000W/m<sup>2</sup> Cell Temperature 25°C AM=1.5

NOCT: Irradiance 800W/m<sup>2</sup> Ambient Temperature 20°C AM=1.5 Wind Speed 1m/s

\* Power measurement tolerance: ± 3%

CAUTION: READ SAFETY AND INSTALLATION INSTRUCTIONS BEFORE USING THE PRODUCT.

© Jinko Solar Co., Ltd. All rights reserved. Specifications included in this datasheet are subject to change without notice.  
JKM315-335M-60HL-A1-US