

### Built for solar's toughest roofs.

IronRidge builds the strongest roof mounting system in solar. Every component has been tested to the limit and proven in extreme environments.

Our rigorous approach has led to unique structural features, such as curved rails and reinforced flashings, and is also why our products are fully certified, code compliant and backed by a 20-year warranty.



#### Strength Tested

All components evaluated for superior structural performance.



#### PE Certified

Pre-stamped engineering letters available in most states.



#### Class A Fire Rating

Certified to maintain the fire resistance rating of the existing roof.



#### Design Software

Online tool generates a complete bill of materials in minutes.



#### Integrated Grounding

UL 2703 system eliminates separate module grounding components.



#### 20 Year Warranty

Twice the protection offered by competitors.

## XR Rails

### XR10 Rail



A low-profile mounting rail for regions with light snow.

- 6' spanning capability
- Moderate load capability
- Clear & black anod. finish

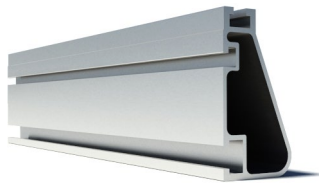
### XR100 Rail



The ultimate residential solar mounting rail.

- 8' spanning capability
- Heavy load capability
- Clear & black anod. finish

### XR1000 Rail



A heavyweight mounting rail for commercial projects.

- 12' spanning capability
- Extreme load capability
- Clear anodized finish

### Internal Splices

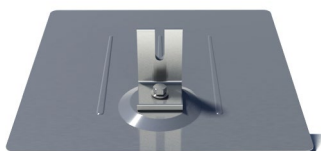


All rails use internal splices for seamless connections.

- Self-tapping screws
- Varying versions for rails
- Grounding Straps offered

## Attachments

### FlashFoot



Anchor, flash, and mount with all-in-one attachments.

- Ships with all hardware
- IBC & IRC compliant
- Certified with XR Rails

### Slotted L-Feet



Drop-in design for rapid rail attachment.

- High-friction serrated face
- Heavy-duty profile shape
- Clear & black anod. finish

### Standoffs



Raise flush or tilted systems to various heights.

- Works with vent flashing
- Ships pre-assembled
- 4" and 7" Lengths

### Tilt Legs



Tilt assembly to desired angle, up to 45 degrees.

- Attaches directly to rail
- Ships with all hardware
- Fixed and adjustable

## Clamps & Grounding

### End Clamps



Slide in clamps and secure modules at ends of rails.

- Mill finish & black anod.
- Sizes from 1.22" to 2.3"
- Optional Under Clamps

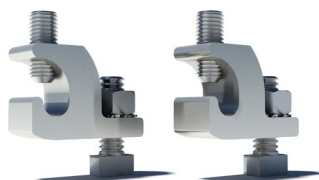
### Grounding Mid Clamps



Attach and ground modules in the middle of the rail.

- Parallel bonding T-bolt
- Reusable up to 10 times
- Mill & black stainless

### T-Bolt Grounding Lugs



Ground system using the rail's top slot.

- Easy top-slot mounting
- Eliminates pre-drilling
- Swivels in any direction

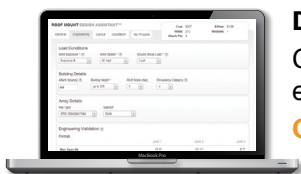
### Accessories



Provide a finished and organized look for rails.

- Snap-in Wire Clips
- Perfected End Caps
- UV-protected polymer

## Free Resources



### Design Assistant

Go from rough layout to fully engineered system. For free.

[Go to IronRidge.com/rm](http://IronRidge.com/rm)



### NABCEP Certified Training

Earn free continuing education credits, while learning more about our systems.

[Go to IronRidge.com/training](http://IronRidge.com/training)