

### Built for solar's toughest roofs.

IronRidge builds the strongest mounting system for pitched roofs in solar. Every component has been tested to the limit and proven in extreme environments.

Our rigorous approach has led to unique structural features, such as curved rails and reinforced flashings, and is also why our products are fully certified, code compliant and backed by a 20-year warranty.



#### Strength Tested

All components evaluated for superior structural performance.



#### PE Certified

Pre-stamped engineering letters available in most states.



#### Class A Fire Rating

Certified to maintain the fire resistance rating of the existing roof.



#### Design Assistant

Online software makes it simple to create, share, and price projects.



#### UL 2703 Listed System

Meets newest effective UL 2703 standard.



#### 20-Year Warranty

Twice the protection offered by competitors.

## XR Rails

### XR10 Rail



A low-profile mounting rail for regions with light snow.

- 6' spanning capability
- Moderate load capability
- Clear & black anod. finish

### XR100 Rail



The ultimate residential solar mounting rail.

- 8' spanning capability
- Heavy load capability
- Clear & black anod. finish

### XR1000 Rail



A heavyweight mounting rail for commercial projects.

- 12' spanning capability
- Extreme load capability
- Clear anodized finish

### Bonded Splices



All rails use internal splices for seamless connections.

- Self-drilling screws
- Varying versions for rails
- Forms secure bonding

## Clamps & Grounding

### UFOs



Universal Fastening Objects bond modules to rails.

- Fully assembled & lubed
- Single, universal size
- Clear & black finish

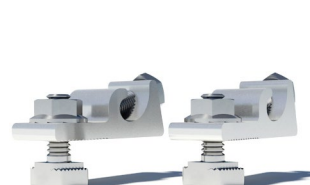
### Stopper Sleeves



Snap onto the UFO to turn into a bonded end clamp.

- Bonds modules to rails
- 6 different sizes
- Clear & black anod. finish

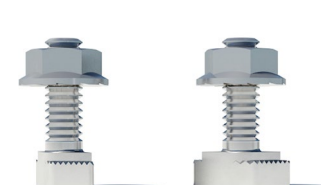
### Grounding Lugs



Connects array to equipment ground.

- Low profile
- Single tool installation
- Mounts in any direction

### Microinverter Kit

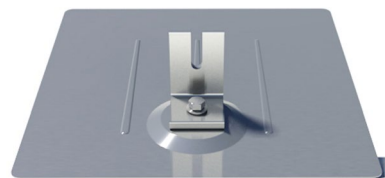


Mount MIs or POs to XR Rails.

- Bonds devices to rails
- Kit comes assembled
- Listed to UL 2703

## Attachments

### FlashFoot



Anchor, flash, and mount with all-in-one attachments.

- Ships with all hardware
- IBC & IRC compliant
- Certified with XR Rails

### Bonded L-Feet



Drop-in design for rapid rail attachment.

- Bonding hardware included
- Forms secure rail connection
- Clear & black anod. finish

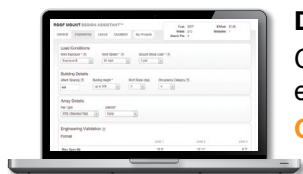
### Standoffs



Raise Flush Mount System to various heights.

- Works with vent flashing
- Ships assembled
- 4" and 7" Lengths

## Resources



### Design Assistant

Go from rough layout to fully engineered system. For free.

[Go to IronRidge.com/design](http://IronRidge.com/design)



### NABCEP Certified Training

Earn free continuing education credits, while learning more about our systems.

[Go to IronRidge.com/training](http://IronRidge.com/training)